

Instrument Key

- ETC 4 50J-Source 4 Jr. 50° ERS, HPL-575w
- ETC 4 70-Source 4 70° ERS, HPL-575w
- ETC 4 50-Source 4 50° ERS, HPL-575w
- ETC 4 36-Source 4 36° ERS, HPL-575w
- ETC 4 26-Source 4 26° ERS, HPL-575w
- ETC 4 19-Source 4 19° ERS, HPL-575w
- Strand 2209-6x9 ERS FEL-1Kw

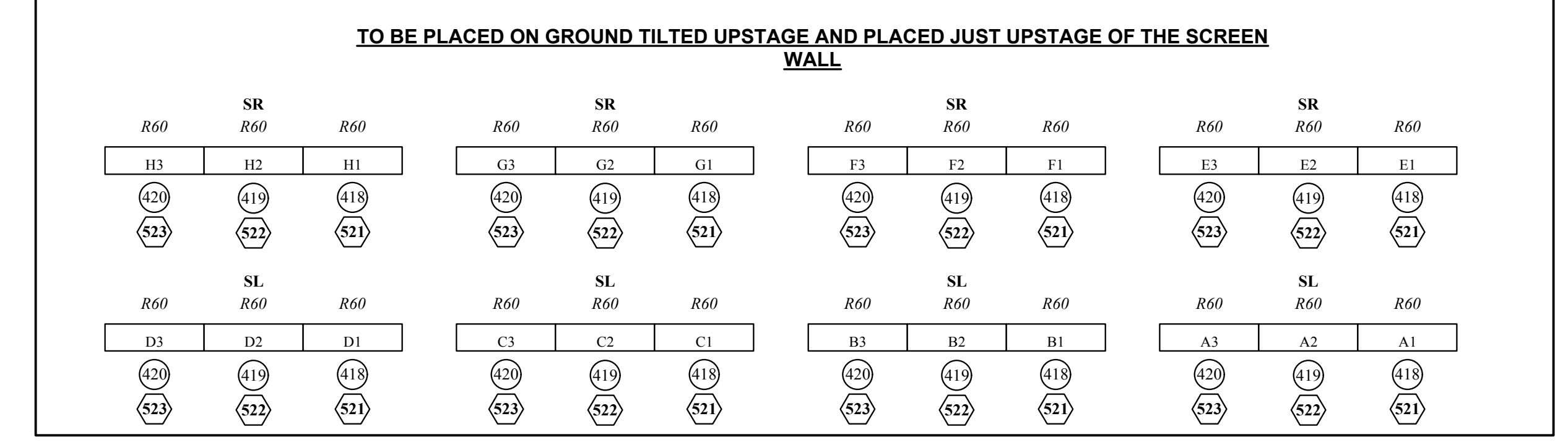
Legend

- Scroller Power Supply
- Color Scroller
- Steel Gobo
- Color Kinetics 12" iColor Cove-QLX
- Color Kinetics Color Blast TR-12
- Martin MAC 250 Entour MSD 250/2

Legend

- Purpose
- Color
- Unit Number
- Align
- Channel

This Drawing Represents Visual Concepts And Lighting Fixture Placement Only. The Designer Assumes No Responsibility For Electrical Or Structural Appropriateness, Or Improper Installation. All Materials And Construction Techniques Must Comply With The Most Rigorous Federal And Local Codes Including: Fire, Safety, Structural, And Electrical. This Drawing Is Prepared For Electricians To Understand The Placement Of Lighting Fixtures Only And Should Not Be Used As The Only Information To Locate Or Install Scenery.



THE UNIVERSITY of MONTANA-SCHOOL of THEATRE/DANCE PRESENTS:

HAMLET

LIGHTPLOT

GREG JOHNSON DIRECTOR

BRYAN KASCHUBE LIGHTING DESIGNER

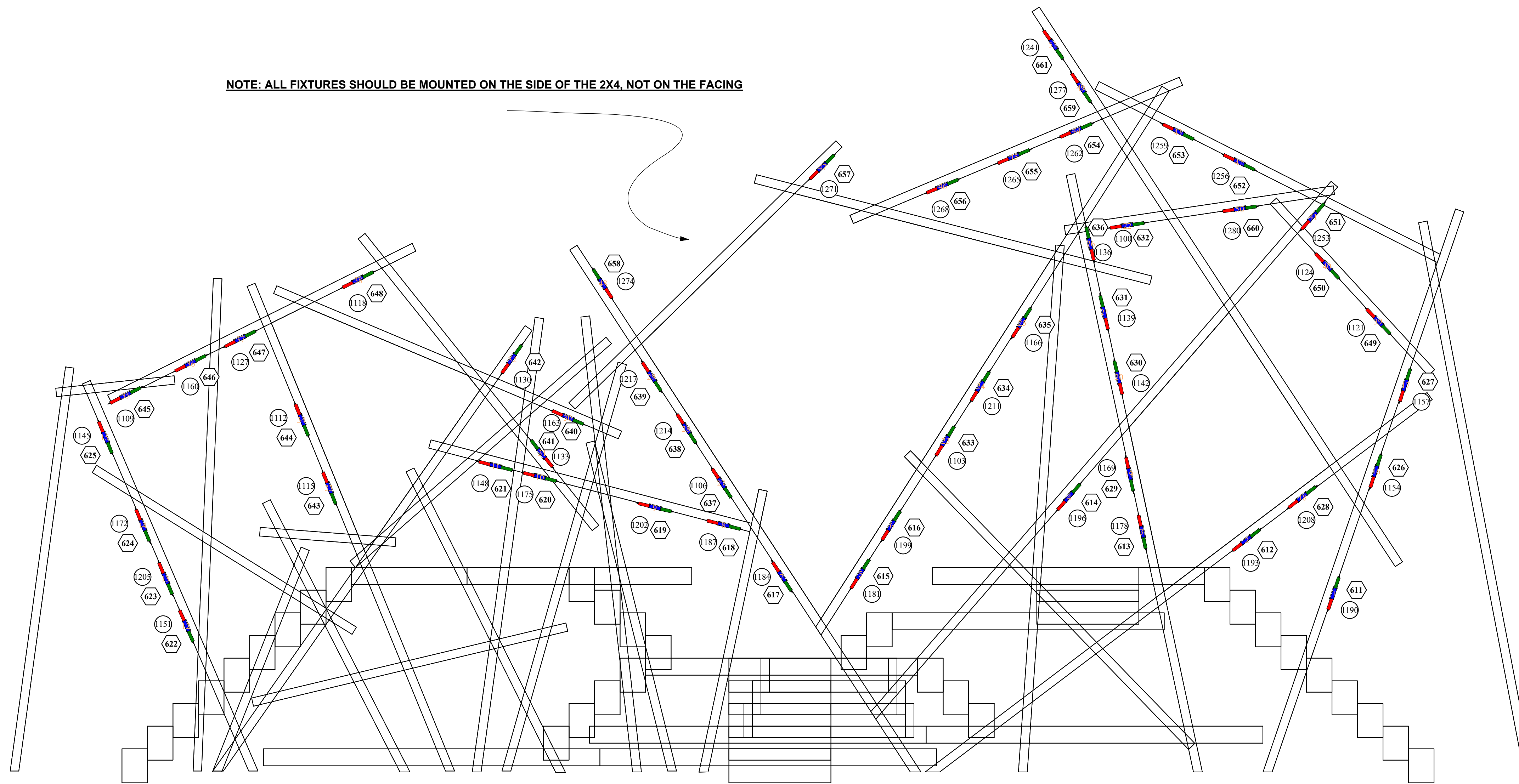
RUSSELL HOMAN MASTER ELECTRICIAN

JOHANNA JOSEPHIAN SCENIC DESIGNER

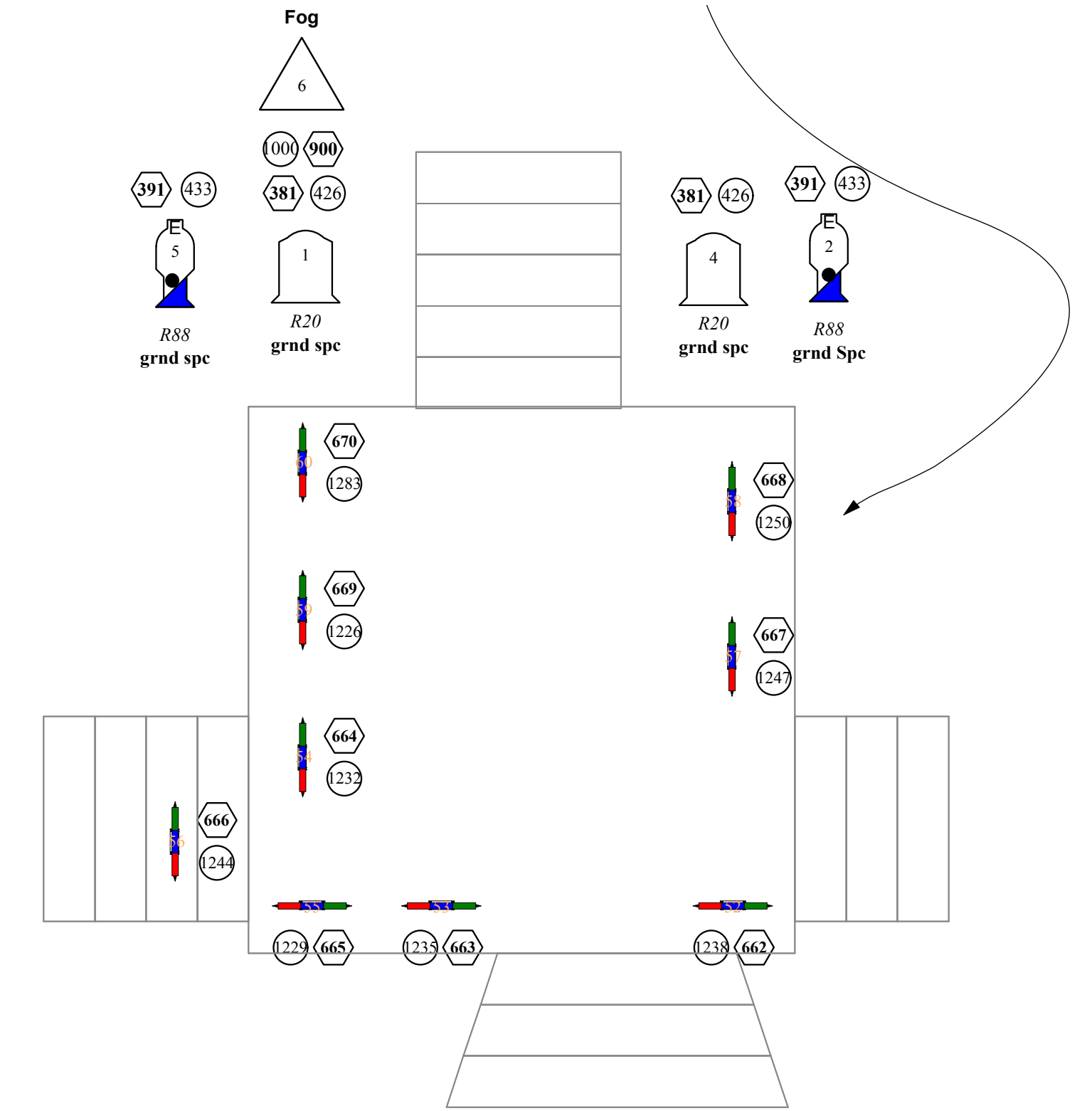
PLATE 1 OF 2

LIGHTING LAYOUT - NOT TO SCALE - 12/10/09

NOTE: ALL FIXTURES SHOULD BE MOUNTED ON THE SIDE OF THE 2X4, NOT ON THE FACING

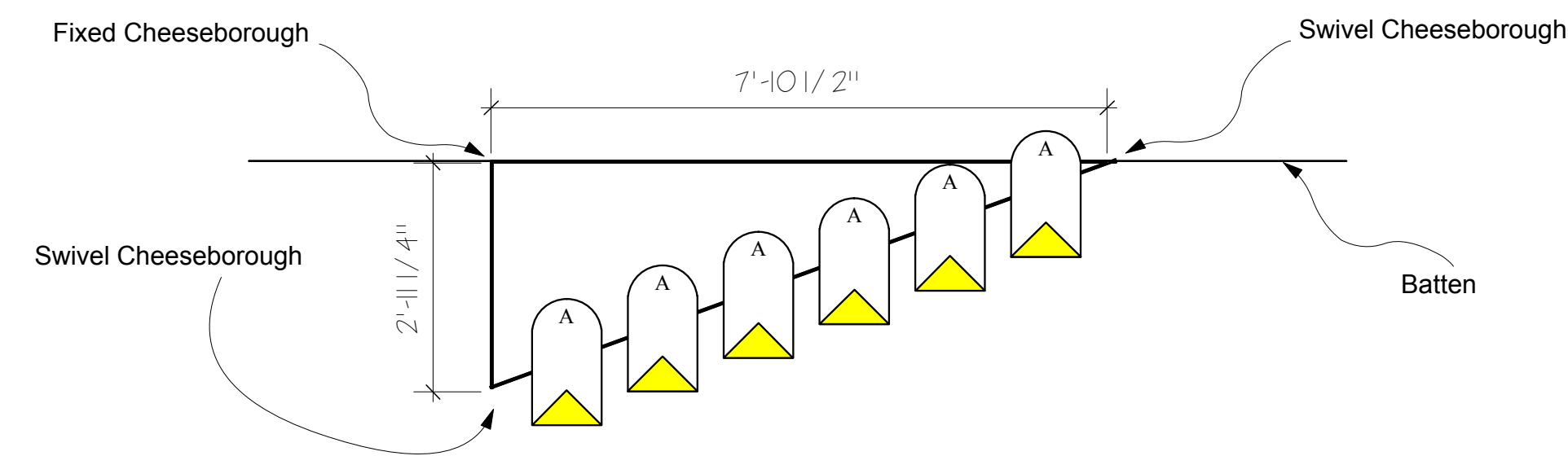










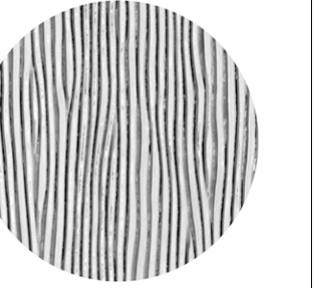
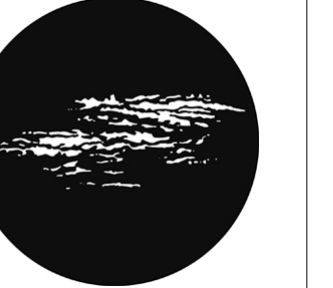

NOTE: iCove QLX FIXTURES SHOULD BE MOUNTED UNDER THE PLATFORM FACING DOWN. INCANDESCENT FIXTURES SHOULD BE PLACED ON FLOORMOUNTS AND FOG MACHINE SHOULD BE PLACED ON AN ANGLED BRACKET TO POINT UP TOWARDS THE PLATFORM.



PIPE END PAR CAN RIGGING

This view is of the Par Can Rigging on SR; SL Par Cans are a mirror image of this. All piping should be Schedule 40 pipe of the appropriate diameter of the existing Cheeseborougs. All cabling should neatly follow the path of the pipe and not just drop straight down from the batten.



Ch. 51-56 6 Gobos B Size  Glass Rosco 56103 Free Flow - Midnight	Ch. 81-86 6 Gobos B Size  Steel Rosco 77119 Leaf Breakup (Small)	Ch. 161-165 5 Gobos B Size  Steel Rosco 77564 Loose Weave	Ch. 181-184 4 Gobos M Size  Steel Rosco 78420 Yarn Breakup	Ch. 201-204 4 Gobos M Size  Steel Rosco 78234 Shattered Glass	Ch. 231-234 4 Gobos M Size  Steel Apollo MS-1054 Grass Textured	Ch. 391 2 Gobos B Size  Steel Gam 357 Beams	Ch. 511-513 3 Gobos M Size  Steel Rosco 77543 Crazed	Ch. 701-703 3 Gobos B Size  Glass Rosco 33607 Irregular Strands	Ch. 704-706 3 Gobos B Size  Steel Rosco 78241 Layered Cloud	Ch. 707-709 3 Gobos B Size  Steel Rosco 77732 Realistic Leaves
---	---	--	---	--	--	--	---	--	--	---

Instrument Key

- ETC 4 50J-Source 4 Jr. 50° ERS, HPL-575w
- ETC 4 70-Source 4 70° ERS, HPL-575w
- ETC 4 50-Source 4 50° ERS, HPL-575w
- ETC 4 36-Source 4 36° ERS, HPL-575w
- ETC 4 26-Source 4 26° ERS, HPL-575w
- ETC 4 19-Source 4 19° ERS, HPL-575w
- Strand 2209-6x9 ERS FEL-1Kw

Legend

- Scroller Power Supply
- Color Scroller
- Steel Gobo
- Color Kinetics 12" iColor Cove-QLX
- Color Kinetics Color Blast TR-12
- Martin MAC 250 Entour MSD 250/2

This Drawing Represents Visual Concepts And Lighting Fixture Placement Only. The Designer Assumes No Responsibility For Electrical Or Structural Appropriateness, Or Improper Installation. All Materials And Construction Techniques Must Comply With The Most Rigorous Federal And Local Codes Including: Fire, Safety, Structural, And Electrical. This Drawing Is Prepared For Electricians To Understand The Placement Of Lighting Fixtures Only And Should Not Be Used As The Only Information To Locate Or Install Scenery.

THE UNIVERSITY of MONTANA-SCHOOL of THEATRE/DANCE PRESENTS:

HAMLET

*Please provide additional cuts of R119 and R132 or comparable frost for focus.

*Please provide additional top/half hats, barndoors for focus.

*No substitutions without prior consent from the Lighting Designer.

SETMOUNTS GREG JOHNSON DIRECTOR

BRYAN KASCHUBE LIGHTING DESIGNER

RUSSELL HOMAN MASTER ELECTRICIAN

JOHANNA JOSEPHIAN SCENIC DESIGNER

PLATE 2 OF 2

LIGHTING LAYOUT - 1/2" = 1'-0" - 12/10/09